



*Tubbataha Reefs – Philippines*  
**CAGAYAN ISLAND SAFARI**

Depart: 25 May 2025 | Return : 05 June - Ex Brisbane  
 from \$5,895 Diver



- Return International Airfares Ex Brisbane to Manila and Dumaguete flying with **Philippines Airlines** (subject to change until ticketed)
- Australian Departure and applicable airline Taxes



- 1 Nights twin share accommodation including breakfast Belmont Hotel - Manila
- 2 night twin share accommodation including breakfast at **Sipalay Dive Resort - Sipalay**
- Return airport transfers in Manila and Dumaguete airport to Sipalay

**Cagayan Safari**



- Transfer from Sipalay by plane (approx 25min)
- 7 nights accommodation at Easy Diving Eco-Resort (Safari Style Camping Tents or Bungalows)
- Breakfast, lunch and dinner daily on Cagayan Island
- 3-4 daily boat dives Includes: tanks, weights and dive guide
- Island Trip



**NOTE**

Every diver is obliged to bring his own dive computer, underwater torch and a Surface Marker Buoy

**Price does not include**

Travel insurance | Personal spending money and any excess luggage fees | Marine Park Fees (PHP 1800 - subject to change)

**Booking conditions and requirements:**

To secure your place on this trip, please complete an online booking form and return it together with a deposit amount of \$500 pp. Package subject to change at any time due to supplier rate changes and currency exchange rates. See other terms & conditions as per the Dive Adventures website [www.diveadventures.com.au](http://www.diveadventures.com.au)



**Tweed Sea Sports**  
 33 Machinery Drive, Tweed Heads South, NSW 2486  
 Ph: 07 5524 3683  
[www.tweedseasports.com](http://www.tweedseasports.com)



Booking Reference : #S29124 Date : 27/08/2024

[www.diveadventures.com.au](http://www.diveadventures.com.au)





# PHILIPPINES

## The Ultimate Dive Adventure

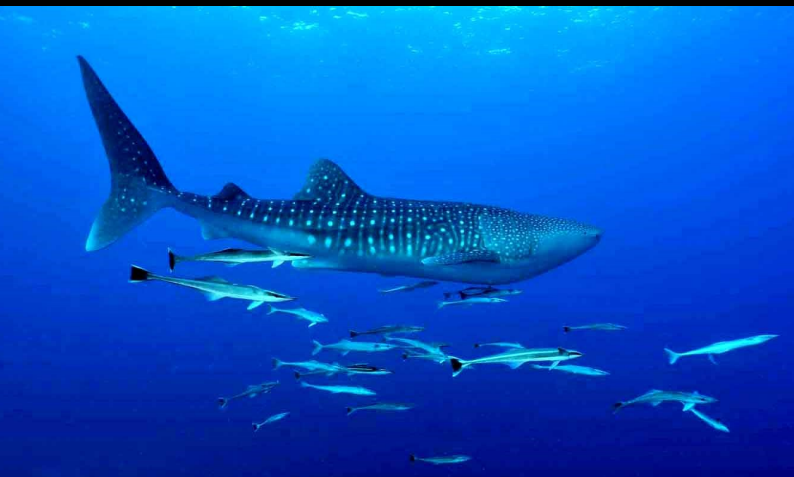
Explore & Dive World famous Tubbataha Reefs

Philippinen

Ex. Brisbane from **\$5895**

*Special Group Departure*

**25 May - 05 June 2025**



Join us on an amazing adventures to the remote and pristine reefs of Tubbataha Reefs - Philippines .

The Tubbataha Reefs Natural Park, is a protected area of the Philippines located in the middle of the Sulu Sea. The marine and bird sanctuary consists of two huge atolls and the smaller Jessie Beazley Reef covering a total area of 97,030 hectares.

These reefs consist of vertical walls or near drop off's rising out of great depths where hammerheads, thresher sharks and whale sharks can be seen.

